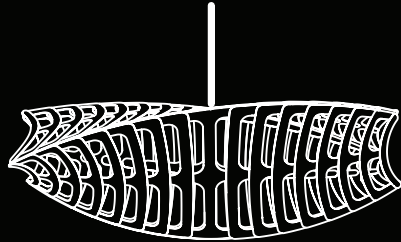


# Toru

HORIZONTAL



david  
trubridge

Model Number	Assembled Fixture Dimensions	Weight	Material Type	Lamp Details	Cord Length	Suspension Hardware	Fasteners	Kitset Available?	Bulb Recommendation	
TOR-0800	X: 32" (822 mm) Y: 15" (389 mm) Z: 13" (337 mm)	1.8 lb (0.8 kg)	3 ply (1/16") Sustainable Bamboo	1 x E26 100 W Max 120V(60Hz)	10' (3 m)	Not required	Nylon Rivets	No	G40	
TOR-1100	X: 43" (1085 mm) Y: 18" (445 mm) Z: 15" (380 mm)	3 lb (1.4 kg)	3 ply (1/16") Sustainable Bamboo	1 x E26 100 W Max 120V(60Hz)	10' (3 m)	Not required	Nylon Rivets	No	G40	
TOR-1400	X: 58" (1475 mm) Y: 28" (709 mm) Z: 24" (604 mm)	4 lb (1.8 kg)	3 ply (1/16") Sustainable Bamboo	1 x E26 100 W Max 120V(60Hz)	10' (3 m)	Not required	Nylon Rivets	No	G40	

## FINISH OPTIONS

### Bamboo - No Finish



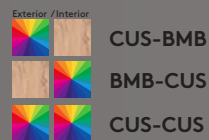
### Paint Finish (two sided)



### Bamboo + Paint Finish (one sided)

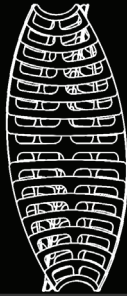


### Custom (Minimum order 6-10)



# Toru

VERTICAL



Model Number	Assembled Fixture Dimensions	Weight	Material Type	Lamp Details	Cord Length	Suspension Hardware	Fasteners	Kitset Available?	Bulb Recommendation	
TOR-0800	X: 15" (389 mm) Y: 32" (822 mm) Z: 13" (337 mm)	1.8 lb (0.8 kg)	3 ply (1/16") Sustainable Bamboo	1 x E26 100 W Max 120V(60Hz)	10' (3 m)	Not required	Nylon Rivets	No	G40	
TOR-1100	X: 18" (445 mm) Y: 43" (1085 mm) Z: 15" (380 mm)	3 lb (1.4 kg)	3 ply (1/16") Sustainable Bamboo	1 x E26 100 W Max 120V(60Hz)	10' (3 m)	Not required	Nylon Rivets	No	G40	
TOR-1400	X: 28" (709 mm) Y: 58" (1475 mm) Z: 24" (604 mm)	4 lb (1.8 kg)	3 ply (1/16") Sustainable Bamboo	1 x E26 100 W Max 120V(60Hz)	10' (3 m)	Not required	Nylon Rivets	No	G40	

## FINISH OPTIONS

### Bamboo - No Finish



### Paint Finish (two sided)



### Bamboo + Paint Finish (one sided)



### Custom (Minimum order 6-10)

