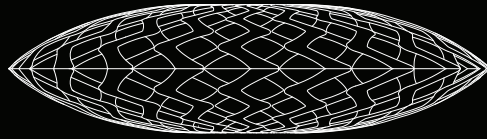




# Flax



david  
trubridge

Model Number	Assembled Fixture Dimensions	Weight	Material Type	Lamp Details	Cord Length	Suspension Hardware	Fasteners	Kitset Available?	Bulb Recommendation	
FLX-0800	X: 31" (800 mm) Y: 9" (220 mm) Z: 31" (800 mm)	3.3 lb (1.5 kg)	3 ply (1/16") Sustainable Bamboo	1 x E26 100 W 120V(60Hz)	10' (3 m)	Not required	Nylon Rivets	Yes	A19 / G25	
FLX-1500	X: 59" (1500 mm) Y: 13" (325 mm) Z: 59" (1500 mm)	15.4 lb (7.0 kg)	3 ply (3/32") Sustainable Bamboo	1 x E26 100 W 120V(60Hz)	10' (3 m)	3 x Suspension Wires	Nylon Rivets	Yes	A23 / G40	

## FINISH OPTIONS

### Bamboo - No Finish



BMB-BMB

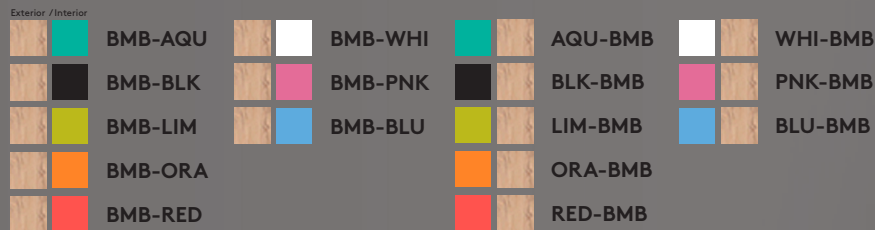
### Paint Finish (two sided)



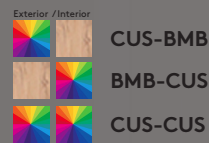
BLK-BLK

WHI-WHI

### Bamboo + Paint Finish (one sided)



### Custom (Minimum order 6-10)



CUS-BMB

BMB-CUS

CUS-CUS

